

ART JAM at the Farm

24419 68TH Avenue, Langley, BC

AGENDA + WORKSHOPS

9:00 - 9:30 Registration and Coffee

9:30 - 12:30 Morning Workshops

WATERCOLOUR PAINTING with Stefan Brunhoff

URBAN SKETCHING with Roman Czemerys

CYANOTYPE PRINTMAKING with Edith Krause

12:30 - 1:30 Lunch in the Garden

1:30 - 4:30 Afternoon Workshops

FOUND OBJECTS with Claire Moore

PORTRAIT DRAWING IN CHARCOAL with Grace Tan

EXPLORING NOTAN THROUGH RELIEF PRINT MAKING with Alan Hartley

WATERCOLOUR PAINTING with Stefan Brunhoff

THE WORKSHOP

In this Workshop I plan to show beginner and intermediate watercolorists some of the basic skills to put you on the road toward better painting. I want to diminish the commonly expressed fear that it's a "difficult, unforgiving" medium. As in music, there are some fundamental things to learn in watercolour that form the basis of making paintings that you are happy with. Things such as improving drawing skills, materials choices, varieties of ways of doing washes, planning out a painting, brushwork, mixing colours, glazing, wet into wet painting, soft edges /hard edges, tonal range, pushing colours, wet over dry painting etc. It will be a combination of me demonstrating and you taking things out for a spin. Please bring a photograph that you could work from or an object you would consider painting. Depending on the surroundings at the farm, there may be suitable subject matter there.

ARTISTS BIO

Stefan Brunhoff studied figure drawing, sculpture, printmaking and painting, and worked as a professional artist. He then trained as an architect, and worked in the profession for over three decades. On retiring from architecture he continues to paint.

MATERIALS list

Brushes: Nos. 4, 8, 10, 14. (Round) Opus Allegro are an inexpensive synthetic brand I use. A wash brush; Opus Adagio "L" eg. or other larger brush for this purpose.

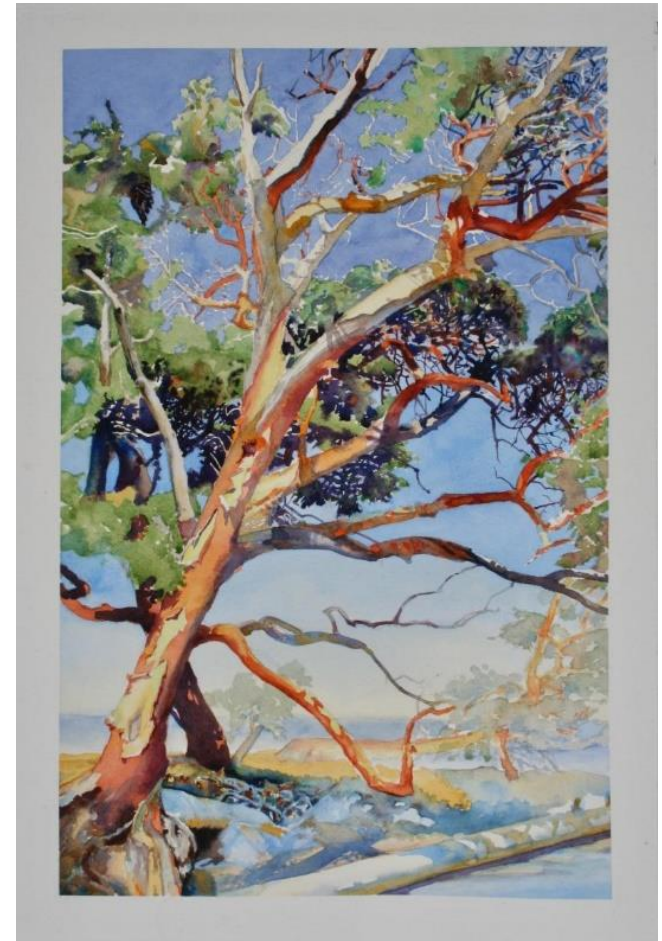
Paint: BASIC: Cobalt Blue, Ultramarine Blue, Sap Green, Burnt Sienna, Raw Sienna, Cadmium Yellow light, Cadmium Red, (Tube paints). Also great to have: (Cerulean Blue, Alizarine Crimson, Viridian, Aureolin Yellow, Light Reed)
BRANDS: Winsor Newton, Holbein, Daniel Smith, Sennelier, Van Gogh tube paints. Less expensive brands like Cotman, are best for just earth colours, grey and blacks.

Water Containers: Yoghurt container or plastic ice cream tub. Smaller container that you can squirt water out of to add to paint for thinning.

Cloth: An old dishtowel you are willing to sacrifice. Mine last years in service. This is a tool. I use a lot and am surprised more painters don't.

Paper: My first choice is always Arches 160lb Cold Press. Especially when Beginning watercolour, I stuck with Arches, even though it cost more, the paper makes a huge difference and you need all the technical leverage you can get when starting out. Pricier, but cheaper if you buy in bulk. Fabriano Artistic, Winsor Newton, Saunders Waterford, I also recommend. Cheaper paper like Carson's, Strathmore, Dale Rowney, Opus Student, I find consistently disappointing and tricky to make work. Buyer beware but you might be able to make them work for you. **SIZE:** Min. 10"x14" and up. If loose sheets, bring a backing board of some kind. I tend to use Coroplast, like corrugated cardboard but plastic. Alligator clips to hold paper to board.

Palette: I use a plastic pallet with mixing wells, they are inexpensive and the best ones I've found are at Deserres, these ones have deeper wells so the colour doesn't creep over into other wells. I squeeze tube paint into the small paint wells



URBAN SKETCHING with Roman Czemerys

THE WORKSHOP

The workshop is intended for beginner to intermediate artists wanting to explore ink line drawing enhanced with watercolour washes. It's a technique used by urban sketchers and travel journalists alike. We'll start with a line drawing and end up with something that looks like a painting. This no pressure workshop is intended for you to learn a three-step process that you can use to capture images while outdoors or from reference photos. The three steps include; a.) Creating a line drawing sketch, b.) Adding black highlights, c.) Tinting the drawing with watercolour.

ARTISTS BIO

Roman Czemerys is a Vancouver-based artist whose passion for architecture has taken him on a journey from designing buildings to creating intricate ink line watercolour artworks. With a lifetime of experience as an architect, Roman has an exceptional eye for detail, composition, and perspective, which are evident in his stunning artworks. Roman's artistic style is a unique blend of meticulous ink line work and free flowing watercolour washes, capturing the essence of his subjects with distinctively intricate and delicate touch. Now retired from architecture Roman spends much of his time urban sketching and drawing and painting in his studio at [1000 Parker Street](#) in Vancouver.

MATERIALS LIST

The list below is just a guideline for suggested types of pens, brushes and materials and by no means suggests you need these specifically. You may well have many of these things lying around the house already. The intent is to be able to sketch with a few simple materials.

Fine Line Ink Pen - Black Permanent Ink

Fountain pen

Sakura Pigma Micron Pen 02 or 03

or similar

Brush Pen

Sakura Pigma Brush Pen

Pentel Brush pen

Sharpie Permanent Marker Fine point

Watercolours

Watercolour Sketch Pocket set - 8 to 12 colours

Tubes & Palette - Cerulean Blue, Ultramarine Blue, Alizarin Crimson, Cadmium Red, Sap Green, Lemon Yellow, Yellow

Ochre, Burnt Sienna, Prussian Blue

Watercolour Brushes

#6 or #7 Round

Rigger or Fine Line brush

Mixed Media or Watercolour Sketch Book - 7"x10", 9"x12"

Canson XL Mixed Media Pad

Strathmore 300 Series

Opus Student Water Colour Paper Pack of 20

Other

Spray Bottle

Water Container

Paper Towel / Tissues



CYANOTYPE PRINT MAKING with Edith Krause

THE WORKSHOP

Cyanotype is a printing process that utilizes light-sensitive dye, the sun and water to create monochromatic images. You'll learn how to prepare paper or fabric, expose your prints to the sun, and develop them with water! Bring large format black and white negatives if you have them, translucent objects, or objects with interesting silhouettes. Botanical specimens work particularly well and you'll be able to collect materials outside on the farm. You'll also have opportunity to create drawings on transparencies that you can use as "negatives".

ARTISTS BIO

Edith Krause is a printmaker who learned her craft at (now) Emily Carr University (BFA, 2002) and the University of Alberta (MFA, 2011). Her work primarily employs screen-print, woodcut, and digital media; biological themes feature prominently.

MATERIALS

A \$20 fee for materials provides you with paper, fabric, transparencies, drawing materials, and chemicals. You're also invited to bring fabrics of your own to print on. If you have any questions, feel free to contact Edith at edithkrause22@yahoo.ca



FOUND OBJECTS WORKSHOP with Claire Moore

THE WORKSHOP

Explore using natural materials and found objects in unexpected ways. We will build intuitively using drills and dowels, bamboo, grasses, etc.

ARTISTS BIO

Claire Moore is a multi media artist who increasingly uses natural materials as a way to reduce her artistic footprint. Her work ranges from large scale outdoor weavings to small hybrid assemblages that explore interspecies connections and the impacts of climate change. She belongs to the Z.Inc artist collective based in Surrey. www.zincartcollective.ca On Instagram: @clairemooreart

MATERIALS LIST

Bring any natural treasures that speak to you.



PORTRAIT DRAWING IN CHARCOAL with Grace Tan

THE WORKSHOP

Faces have always excited and fascinated me. As a portrait artist who prefers working from life, my goal is to capture the essence of the model before me. To accomplish that, an understanding of anatomy with observation and drawing skills are honed in to give integrity to the visual interpretation of the image of the subject. The drawing is after all a two-dimensional illusion of a three-dimensional human form. For those who share this same excitement, or for those who are exploring, perhaps the few tips I offer you will spur you on the way. Please bring photos to use as reference, and a model may be available on the day.

ARTISTS BIO

Grace was born in Hong Kong and spent her formative years in England. She received her Art education partly in London and Toronto. For some thirty years after graduating from Ontario College of Art in Graphic Design and earning a Bachelor of Arts from University of Guelph, Grace did not engage in any artistic activities but devoted her time to the care of home and family. Since 2000, she has inched her way back into art-making with her main focus in figurative art and her most preferred medium, today, is charcoal. 'Charcoal feels like the extensions of my fingers!'

MATERIALS

The instructor will provide all materials. There is a \$20.00 materials fee, in addition to the Art Jam registration fee.



EXPLORING NOTAN THROUGH RELIEF PRINT MAKING with Alan Hartley

THE WORKSHOP

Notan is a Japanese word meaning dark-light harmony. In the workshop you will explore different arrangements of light and dark elements through making a black and white linoleum block relief print. You will learn about the artistic idea of notan, and the techniques for making a simple black and white relief print at home. Please bring a 4" x 6" photo or drawing as a starting point for your project. No prior drawing or print making experience is required.

ARTISTS BIO

Alan Hartley is a retired architect, who has translated a life-time of sketching into relief and lithographic print making.

MATERIALS

The instructor will provide all materials. There is a \$10.00 materials fee, in addition to the Art Jam registration fee.

